



Grace Douglas

Actor – Model – Presenter



About Grace

Grace Douglas is a New Zealand-born actress based in Australia, recently seen as “Naima” in the feature film *Bella’s Room* and her supporting role in *Hobsons Choice*.

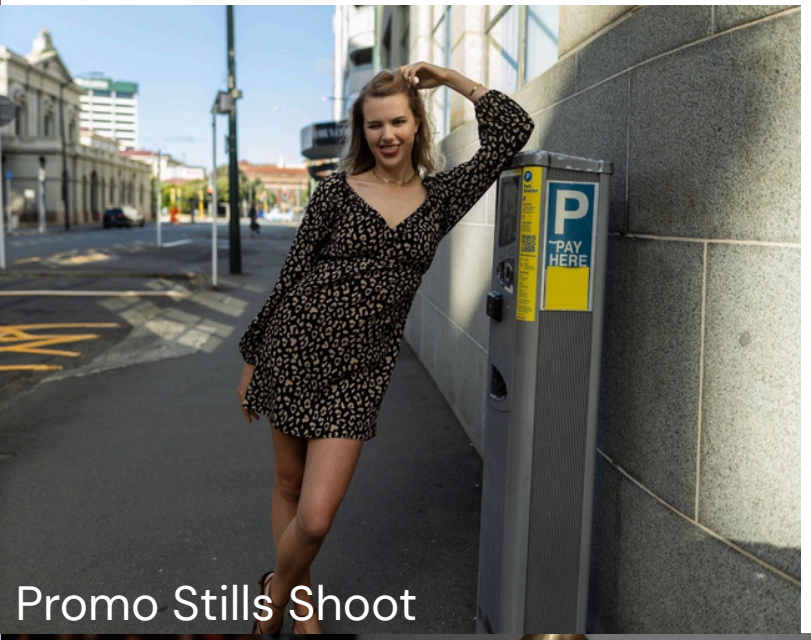
She has also appeared in varied high-profile campaigns, including Youi’s *State of Origin*, *Drumstik* and *Bolton Clarke*, demonstrating her ability to captivate audiences in both narrative and commercial work.

Grace’s dedication to her craft was recognized early when she received a prestigious scholarship to the *Actors Pulse* to pursue her education. Her ongoing development includes advanced training with *Imperfect Creatives*, *The Actors Club* and one on one training with *Sandra Bell* and *Tim Ross*, equipping her with the tools to take on diverse and challenging roles

Grace brings a strong work ethic and vibrant energy to every project. She is bright, bubbly and exudes joy and positivity in all she does. Her experience in acting, modeling, and presenting, combined with her professional training, makes her a versatile and dynamic performer ready to tackle roles across film, television, and commercial media.



Charity Haze - Theatre



Promo Stills Shoot



Kevin Murphy



New Zealand Fashion Week



Commercial - Acting



World of Wearable Art - Theatre

Bella's room – Feature Film



Daffodils – Film



Hobsons Choice – Short Film



Stats

Height 177cm

Dress 8-10

Pants 8-10

Shoe 9

Links

[showcast](#)

[Altai](#)




Contact Information

Grace Douglas 

rubyblueagent@gmail.com 



 0478631251

 rubyblueartists.com.au

