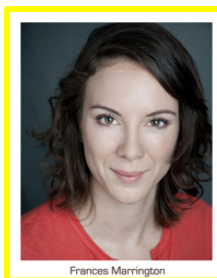


FRANCES MARRINGTON

0402 130 221 – frances@marrington.net

MEAA: 3006053 – www.frances.marrington.net

AGENT: BMEG – (07) 3122 7603 – info@bmegonline.com



HEIGHT: 168cm **WEIGHT:** 60kg **HAIR:** Brown, short **EYES:** Hazel **DOB:** 13/02/82

ACTING (FILM)

Year	Title		Role	Producer / Director	Company / Venue
2020	<i>A Party Day Away</i>	Short	Ellen (S)	Sean Miller	JCU
2019	<i>Bloody Hell</i>	Feature	Woman in Bank	Alister Grierson	Eklectik Vision
	<i>Harrow</i>	Series 2	SOCO	Grant Brown	Hoodlum Entertainm.
2017	<i>Divided</i>	Short	Nicole (L)	Lewis Hadden	Small House Prod.
2010	<i>Sexual Health for Youth</i>	Corporate	Youth Worker (L)	Katrina Prosser	Family Planning Qld
	<i>Perfect</i>	Short	Woman (L)	Maddison Wallis	JCU Film School
	<i>Mr Franklin</i>	Short	Angela (mother)		Griffith Film School
2009	<i>Tender</i>	Short	Jenny (office worker)	David Pawsey	QPIX
	<i>Cowboys Stars and Angels</i>	Short	Annie (mother)	Evan Randall Green	Duckworth Productions
	<i>Repeat After Me</i>	Short	Susan (mother)	Jacob Schiotz	QUT
	<i>Customer Rage Project</i>	Corporate	Jo	Passage Entertainment	UQ Business School
2008	<i>Purge</i>	Feature	Tanya (L)	David King	ACOPA
2006	<i>Watch Me</i>	Feature	Tess (L)	Melanie Ainsley	Scopofile Productions
	<i>A Nocturne</i>	Feature	Mel	Bill Moussalis	Innersense Prod.
	<i>Rusalka</i>	Short	Noblewoman	Dale Bamford	Wolfsbane Prod.
2005	<i>The Floating Brothel</i>	Docu-drama	Nanny	Mark Lewis	BBC
	<i>Dirty Diner</i>	TV Pilot	Tracey (L)	Rupesh Appanah	RMIT
2004	<i>The Remote</i>	Short	Sarah (L)	Rob Innes	Visionnaire
	<i>The Fish Show</i>	Skit show	Olga Octopusnikova (L)	Paul Ritchard	Channel 31
	<i>The Secret Life of Genes</i>	Corporate	Nicki	John Kingsley	JCU Med School

ACTING (THEATRE)

2020	<i>Selkie and Luna</i>	Selkie	Kat Dekker	DPS / Minola Theatre
2019	<i>Henry IV Part 1</i>	Walter Blunt / Lady M	Rebecca Murphy	Qld Shakespeare Ens
	<i>Shakespeare's Shorts</i>	Juliet / Quince / Claudius	Colin Smith	Qld Shakespeare Ens
2018	<i>The Blood Votes</i>	Adela Pankhurst	Rob Pensalfini	QSE / UQ History D.
	<i>Hamlet</i>	Polonius	Qld Shakespeare Ensemble	Roma St Parklands
	<i>A Convict's Hope</i>	Rebecca Rideout	Folly Games	Museum of Brisbane
2017	<i>Minefields and Miniskirts</i>	Eve	Bronwyn Morrow	Brisbane Arts Theatre
2012	<i>Half of Nothing</i>	Woman	Short n Sweet Brisbane	
2010	<i>The Odyssey</i>	Athena / Circe / Crew	Zen Zen Zo Physical Theatre	Qld Arts Council tour
2009	<i>As You Like It</i>	Duke Frederick / Audrey	Qld Shakespeare Ensemble	Roma St Parklands
2008	<i>Zeitgeist</i>	Butoh dancer	Zen Zen Zo Physical Theatre	Old Museum, Bris.
2007	<i>The Ship That Never Was</i>	Porter / Shire	Round Earth Theatre	Strahan, Tas
2006	<i>Hamlet</i>	Ophelia	Eagle's Nest Theatre	Trades Hall
	<i>Sad Bird Boy and Other Dreams</i>	Puppeteer / Performer	theatre in decay	ACMI Screenpit
	<i>Eight Days</i>	Vicki	theatre in decay	Adelaide Fringe
2005	<i>Tyranny</i>	Sandy	Rob Reid – Builders Theatre	La Mama
	<i>Picasso's Women</i>	Dora Maar	Miki Oikawa	Chapel Off Chapel
2004	<i>The Last Word</i>	Meredith	Act-o-matic 3000	North Melb Hall
2003	<i>The Eumenides</i>	Clytemnestra's Ghost	John Bolton	VCA
2002	<i>Play It Again Sam</i>	Linda	John King	Bris Arts Theatre
2001	<i>Stills</i>	Performer	Marie Dumont – QUT	La Boite Theatre
2000	<i>The Duel</i>	Nadhezda	Michael Fitcher – QUT	Woodward Theatre

EDUCATION

2003	BDA (Acting)	Movement; Voice; Text; Improvisation	VCA
2002	BA (Theatre Studies)	Acting; Directing; Th. History; Vis. Art	QUT

ADDITIONAL SKILLS

Voice-over; Physical Theatre; Basic Piano; Drama teaching; Stilt-walking; Face-painting; Yoga; Driver's licence; Typing (70wpm)